

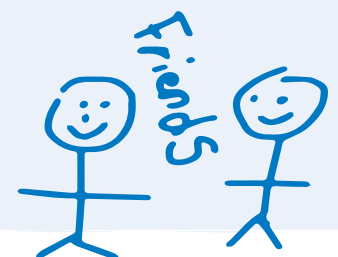
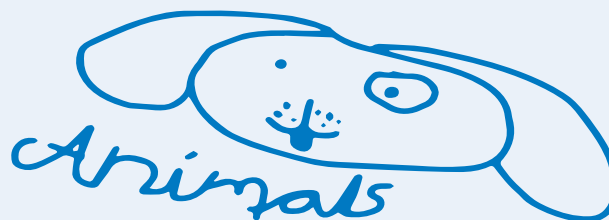
FINANCIAL REPORT

Fiscal Year July 1, 2013 — June 30, 2014

OPERATING REVENUES AND EXPENSES

(Dollars in Thousands)

OPERATING REVENUES	FY 2014	FY 2013
Net Hospital Patient Services Revenue	\$1,435,526	\$1,332,851
Capitation Revenue	35,032	—
Professional Services Revenue	289,064	263,380
Research Grants	163,071	157,693
Other Operating Revenue (includes philanthropy)	197,547	177,581
TOTAL OPERATING REVENUES	\$2,120,240	\$1,931,505
OPERATING EXPENSES	FY 2014	FY 2013
Salaries and Benefits	\$1,246,876	\$1,162,116
Services, Supplies and Other	577,580	491,944
Depreciation	109,214	110,378
Interest	14,170	14,247
TOTAL OPERATING EXPENSES	\$1,947,840	\$1,778,685
AVAILABLE TO REINVEST IN THE MISSION	\$172,400	\$152,820



CONDENSED BALANCE SHEET

ASSETS	FY 2014	FY 2013
Cash and Cash Equivalents	\$156,830	\$249,190
Marketable Securities	389,139	259,916
Patient Accounts Receivable, Net of Allowances	288,806	223,850
Other Current Assets	184,438	132,255
CURRENT ASSETS	\$1,019,213	\$865,211
Property and Equipment, Net of Accumulated Depreciation	998,397	908,535
Funds Held in Trust	38,097	62,803
Other Long-term Assets	61,128	65,873
Interest in Net Assets of Supporting Organizations	1,298,688	1,111,650
TOTAL ASSETS	\$3,415,523	\$3,014,072

LIABILITIES AND NET ASSETS

LIABILITIES		
Accounts Payable and Accrued Expenses	\$299,667	\$239,891
Current Portion of Long-term Debt	32,609	26,995
CURRENT LIABILITIES	332,276	266,886
Long-term Debt	467,542	494,274
Other Long-term Liabilities	206,629	286,807
TOTAL LIABILITIES	\$1,006,447	\$1,047,967
NET ASSETS		
Unrestricted Net Assets	975,039	710,714
Temporarily Restricted Net Assets	153,309	170,437
Permanently Restricted Net Assets	1,280,728	1,084,954
TOTAL NET ASSETS	\$2,409,076	\$1,966,105
TOTAL LIABILITIES AND NET ASSETS	\$3,415,523	\$3,014,072

STATISTICAL HIGHLIGHTS

FY 2014

FY 2013

FY 2012

FY 2011

FY 2010

PATIENTS

Admissions (includes short stay)	30,848	30,804	30,579	30,951	32,981
Average Length of Stay (days)	5.0	4.8	4.7	4.4	4.1
Emergency Department Visits	99,839	127,376	124,274	121,875	125,130
Patient Encounters	1,191,880	1,170,129	1,144,858	1,087,260	1,078,798

OUTPATIENT VISITS

Primary	80,108	78,905	65,347	65,446	65,915
Specialty	864,393	828,743	832,317	797,280	793,814
Test Referral Center	76,539	63,403	65,247	29,868	28,374

SURGICAL PROCEDURES

Inpatient Cases	6,526	6,237	6,365	6,141	5,667
Outpatient Cases	25,325	25,951	27,094	26,168	25,492
Surgical Hours	43,954	45,655	44,240	42,874	40,825

PEOPLE

Active Medical Staff	1,734	1,493	1,572	1,516	1,498
Total Employees	14,973	13,852	12,932	12,654	12,368
Full-time Equivalents	12,681	11,799	10,976	10,781	10,455



Family